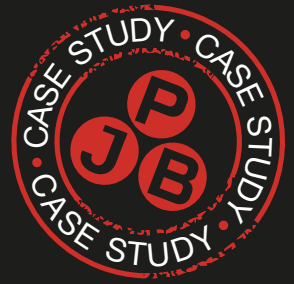




P. J. BARWICK

Electrical Services Ltd

Tel: 07976 222 164 | Email: paul@pjb-electrical.co.uk

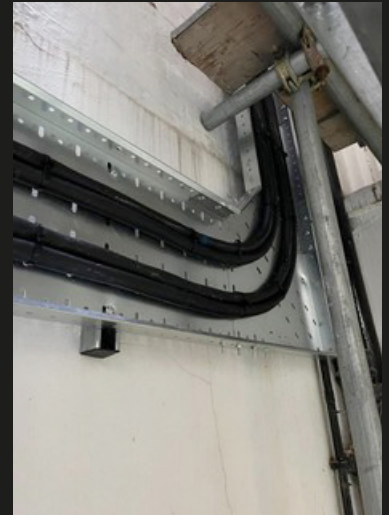


Case Study: Blocks 63 & 65, Pont Street, Chelsea, London SW1X

Phase One has now been completed and consisted of the following:

- New 200Amp TPN Supply to Front Vault of Each Block
- Installation of New 315Amp TPN Switch-Fuses in each Front Vault
- Construction of New Intake Rooms in Shared Rear Lightwell
- Installation of New 400Amp TPN Glasgow Switch-Fuse feeding new 12 Way Ryfeild Panels
- New Galvanised Steel Truncking installation for New Double Insulated Tails
- New Meter Positions wired Via Henley Red-Link Fuseways ready for Re-Location of Tenants & Landlords existing Metering Equipment
- New Galvanised Steel Heavy Duty Cable Trays running Vertical up Lighting Well to Each Flat in Each Block
- New 25mm 3 Core LSF/SWA Sub-Mains Cable Clipped direct to New Galvanised Steel Heavy Duty Cable Tray ready for Phase Two.

**PHASE ONE
WORKS:
ELECTRICAL &
DATA WORKS**

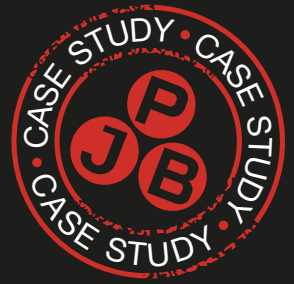




P. J. BARWICK

Electrical Services Ltd

Tel: 07976 222 164 | Email: paul@pjb-electrical.co.uk



Case Study: Blocks 63 & 65, Pont Street, Chelsea, London SW1X

PRODUCT LINKS:

Click on link to see online data sheet

[Armorduct](#)

[Trunking](#)

[Eaton 4PCB \(Page 152\)](#)